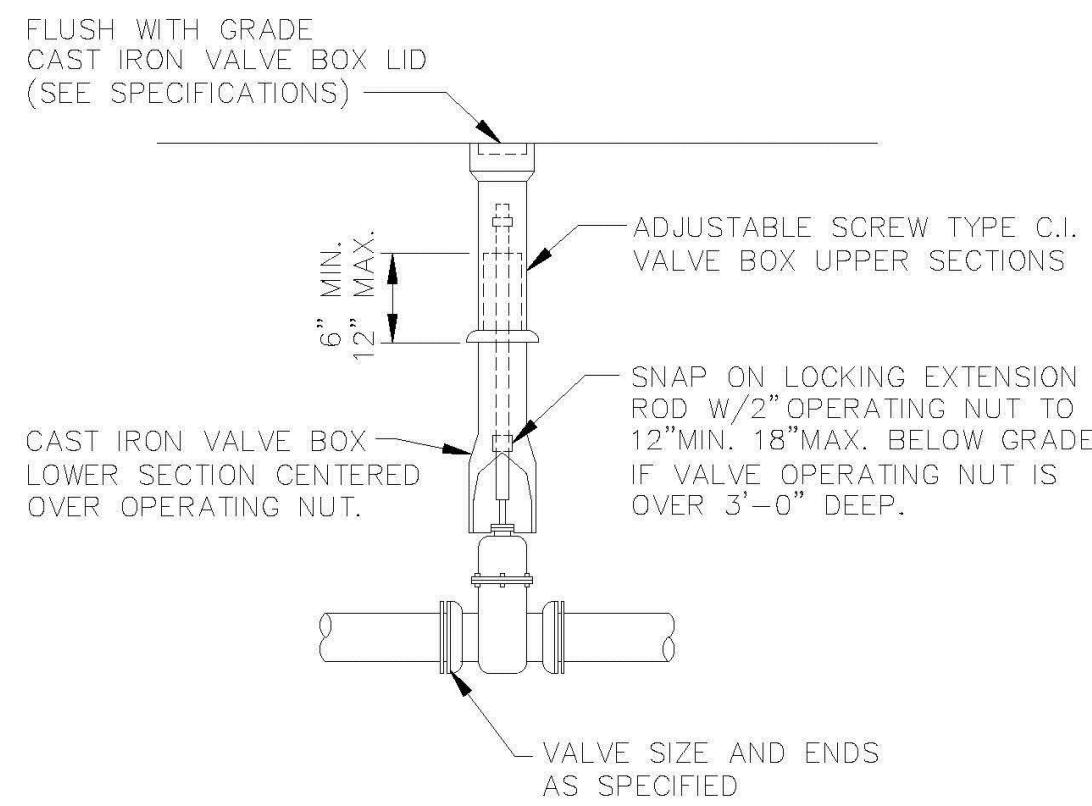


VALVE BOX SETTINGS

ENGINEERING STANDARDS 2022

REVISIONS	ENGINEERING DIVISION	VALVE BOX SETTINGS
BY DATE	CITY OF POMPAÑO BEACH	
S.S. 04-2005		DATE: MAY 2022
		DWG. NO.
	SCALE: N.T.S.	102-1



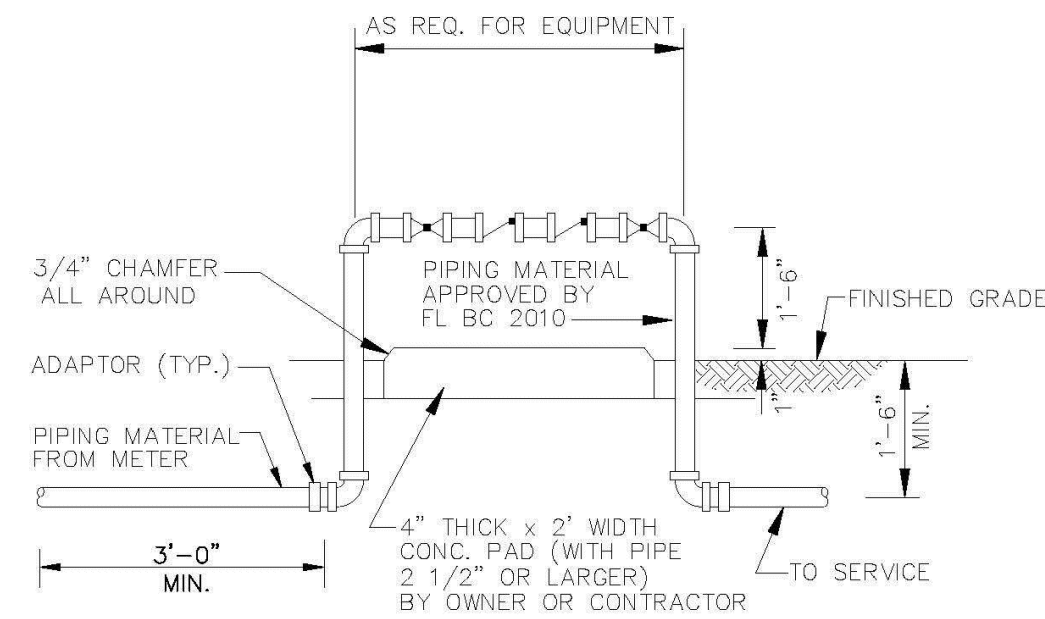
GATE OR PLUG VALVE SETTING

USE MEGALUGS AT ALL PIPE JOINTS

ALL D.I.P. TO BE PAINTED
BLUE ON TOP HALF OF PIPE.

ENGINEERING STANDARDS 2022

REVISIONS	ENGINEERING DIVISION	GATE OR PLUG VALVE SETTINGS
BY DATE	CITY OF POMPAÑO BEACH	
S.S. 04-2005		DATE: MAY 2022
T.W. 11-2007		DWG. NO.
	SCALE: N.T.S.	103-1

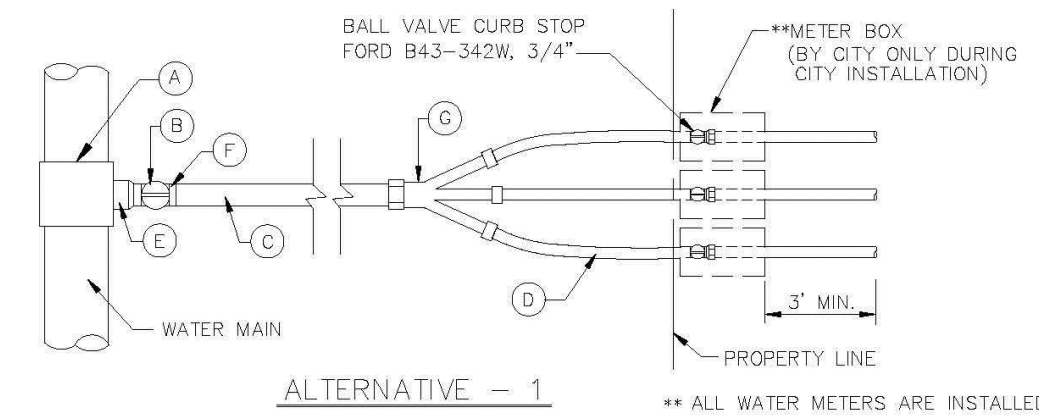


BACKFLOW PREVENTER

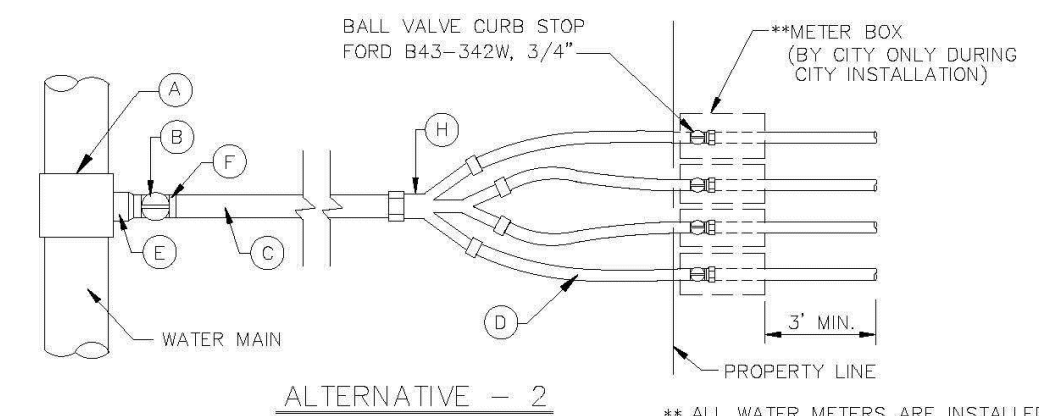
USE MEGALUGS AT ALL PIPE JOINTS 3" AND LARGER
PLEASE SEE METER INSTALL DIMENSION LIST ON STANDARD NO. 106-4
SMALL UNITS UNI-STRUT SUPPORT

ENGINEERING STANDARDS 2022

REVISIONS	ENGINEERING DIVISION	BACKFLOW PREVENTER
BY DATE	CITY OF POMPAÑO BEACH	
T.W. 04-2008		DATE: MAY 2022
S.S. 03-2009		DWG. NO.
S.S. 11-2012		
S.S. 01-2013	SCALE: N.T.S.	106-1



2" WATER SERVICE W / 3 METERS

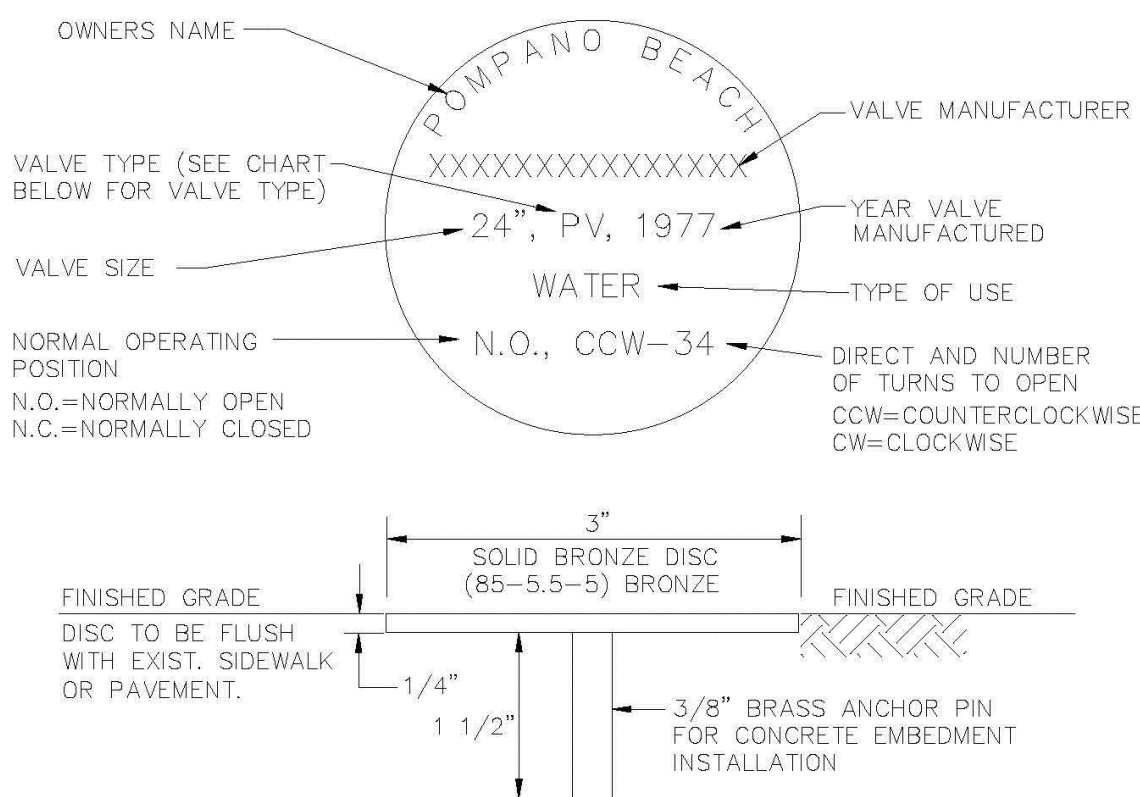


2" WATER SERVICE W / 4 METERS

- (A) 2" TAPPING SADDLE IRON PIPE
THREADED FORD FC-202 OR EQUAL.
(B) 2" RESILIENT SEATED GATE VALVE
CLOW F81-03
MUELLER A-23-50-8
2" OPERATING NUT BOXED TO GRADE - C.I. BOX
(C) 2" BLUE POLYETHYLENE
(D) 1" POLYETHYLENE SOLID BLUE C.T.S. (3)
(E) 2" X 4" BRASS NIPPLE
(F) 2" MIP COUPLING C-84-77 - PACK JOINT - CTS
(G) 3 "Y" BRANCHES - Y48-347 FORD
(H) 4 "Y" BRANCHES - 08Y40Q A.Y. McDONALD

ENGINEERING STANDARDS 2022

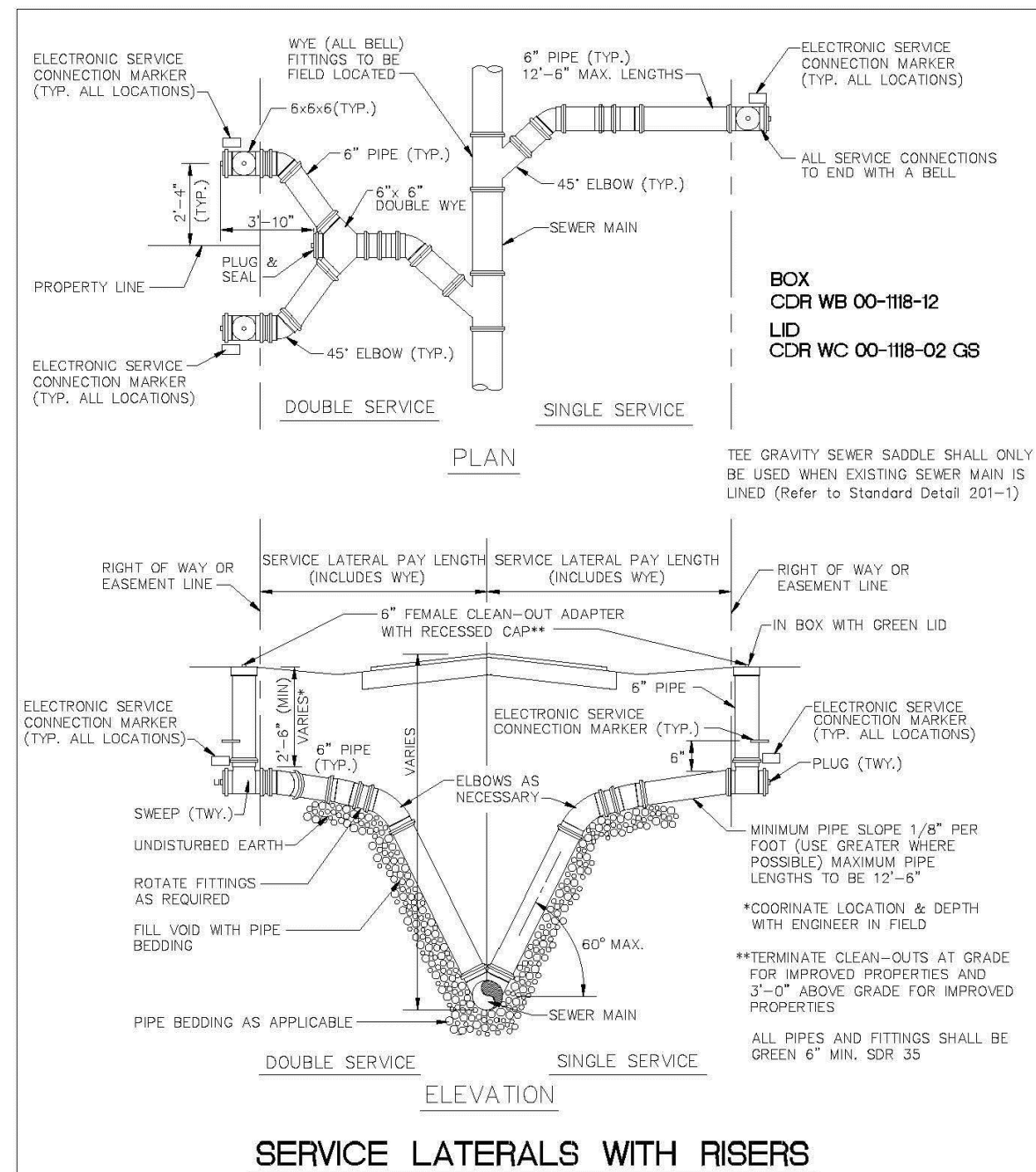
REVISIONS	ENGINEERING DIVISION	2" WATER SERVICE "Y" BRANCHES ALTERNATIVES
BY DATE	CITY OF POMPAÑO BEACH	
S.S. 11-2012		DATE: MAY 2022
		DWG. NO.
	SCALE: N.T.S.	107-3



UNDERGROUND VALVE IDENTIFICATION MARKER

ENGINEERING STANDARDS 2022

REVISIONS	ENGINEERING DIVISION	UNDERGROUND VALVE IDENTIFICATION MARKER
BY DATE	CITY OF POMPAÑO BEACH	
S.S. JUNE 2005		DATE: FEB. 2022
T.W. 11-2007		DWG. NO.
T.W. 02-2008		
S.S. 1-24-12	SCALE: N.T.S.	115-1



SERVICE LATERALS WITH RISERS

ENGINEERING STANDARDS 2022

REVISIONS	ENGINEERING DIVISION	SERVICE LATERALS
BY DATE	CITY OF POMPAÑO BEACH	
T.W. 11-2007		DATE: JUNE 2022
S.S. 01/27/12		DWG. NO.
S.S. 07/10/12		
S.S. 02/05/16	SCALE: N.T.S.	200-1

Adjustable Repair Coupling

NOTES

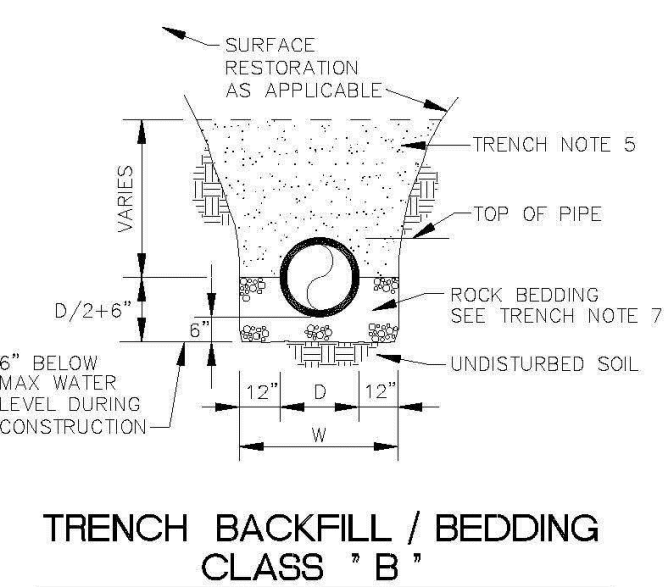
- Synthetic rubber gasket is strong, durable and resilient to ultraviolet rays, ozone, fungus growth and normal sewer gases. More pliable and easier to install in cold weather applications than an Elastomeric PVC gasket.
- Sealing "O" rings under the clamp prevent pipe slippage and create a more positive seal.
- More transition couplings for dissimilar pipe types and sizes are comprised of a one-piece transition gasket, eliminating the use of bushings that are difficult to install and easy to lose on the job site.
- Surgical Grade 316 stainless steel Nut & Bolt clamps are corrosion resistant, providing outstanding protection in severe environments such as marine applications, poorly aerated or moist soils, contaminated ground conditions (particularly industrial fill sites) and where the ground water contains chloride, sulfates or bicarbonates. Increased band tension of the Nut & Bolt clamp ensures a leak-proof, root-proof seal that is resistant to both infiltration and exfiltration.
- Series 300 stainless steel shear band is the heaviest in the industry, over 33% thicker than the competition.
- Broadest range of couplings on the market in sizes ranging from 1 1/2" to 96" in diameter. Used for the alteration and rehabilitation of gravity-flow sewage pipes made of clay, cast iron, plastic, concrete, ductile iron, asbestos cement, fiber cement and truss pipe.

Specification:
Furnish and install stainless steel shielded sewer couplings, as manufactured by Mission Rubber Company Coupling to meet ASTM C 1173. Gasket to meet ASTM C 425 Table 2, to be rubber and be environmentally certified. Series 300 stainless steel shear band with a minimum thickness of .012", surgical grade 316 stainless steel clamps with nut & bolt take up, shear ring and clamps to meet all requirements of ASTM A 240. All stainless steel parts and clamping mechanisms to be manufactured in the U.S.A. Transitional sizes to utilize a one piece gasket.

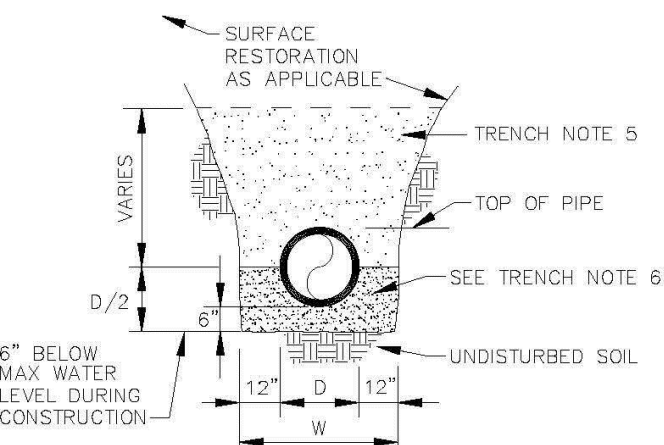
ADJUSTABLE REPAIR COUPLING PVC/CLAY NOTES

ENGINEERING STANDARDS 2022

REVISIONS	ENGINEERING DIVISION	ADJUSTABLE REPAIR COUPLING
BY DATE	CITY OF POMPAÑO BEACH	
		DATE: MAY 2022
		DWG. NO.
	SCALE: N.T.S.	202-1



TRENCH BACKFILL / BEDDING CLASS "B"



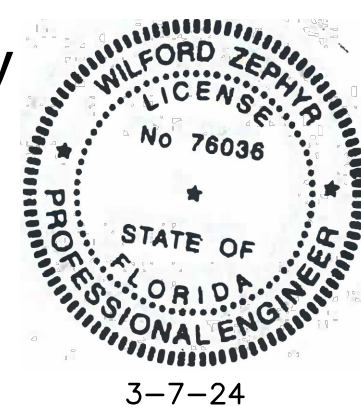
TRENCH BACKFILL / BEDDING CLASS "A"

ENGINEERING STANDARDS 2022

REVISIONS	ENGINEERING DIVISION	TRENCH BACKFILL / BEDDING
BY DATE	CITY OF POMPAÑO BEACH	
S.S. JUNE 2005		DATE: JUNE 2022
		DWG. NO.
	SCALE: N.T.S.	203-1

WILFORD
ZEPHYR

Digitally signed by
WILFORD ZEPHYR
Date: 2024.03.13
09:31:49 -04'00'



THIS ITEM HAS BEEN DIGITALLY SIGNED AND SEALED BY
WILFORD ZEPHYR ON THE DATE ADJACENT TO THE SEAL.

PRINTED COPIES OF THIS DOCUMENT ARE NOT CONSIDERED
SIGNED AND SEALED AND THE SIGNATURE MUST BE VERIFIED
ON ANY ELECTRONIC COPIES.

WATER & SEWER DETAILS

SCALE: N.T.S.

REVISIONS

NO.	DATE	DESCRIPTION
1	1-18-24	DRC REVIEW COMMENTS

ZEPHYR ENGINEERING

WILFORD ZEPHYR, P.E.
HOLLYWOOD, FL
(786) 302-7693
wzephyr@gmail.com
CA# 31158

ZE

PROPOSED 12 HOUSES

NW 10th STREET
POMPAÑO BEACH, FL 33060

P.E.#: 76036

DATE: 7/28/23

SCALE: N.T.S.

SHEET NO.:

CWS-3

7 OF 9

PROJECT NO.: 23-34